

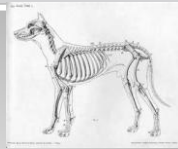
Parts of a dog

- Identify and label the parts of a dog

Objective

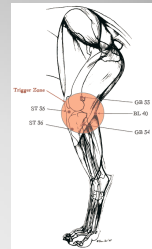
Dog Anatomy

- Skeletal systems
 - about 320 bones.
 - Large breeds have larger bones, and small breeds have smaller bones.



External Parts of the dog

- Hind foot
 - A back foot
- Hock
 - The bones that form the ankle/heel
- Stifle
 - The knee, located above the ankle on a hind leg



External Parts of the dog

- Tail
 - The hindmost part of the backbone, set on the rump
- Thigh
 - The upper part of a hind leg
- Hip
 - The joint at the uppermost part of a hind leg



External Parts of the dog

- Shoulder
 - The joint at the uppermost part of a foreleg
- Back
 - The part of the body between the loin and the withers
- Withers
 - The top of the shoulders, just behind the neck



External Parts of the dog

- Nose
 - The tip of the muzzle
- Muzzle
 - The front parts of the jaws
- Stop
 - The indented part of the skull between the eyes



External Parts of the dog

- Ear
 - Either of two fleshy, often triangular appendages found on the head and associated with hearing
- Ruff
 - The long, thick hair that grows around the neck
- Flews
 - The hanging part of the upper lip



External Parts of the dog

- Forearm
 - The part of a foreleg between the elbow and the pastern
- Pastern
 - The part below the knee of the front leg or below the hock of the hind leg
- Carpals
 - The wrist; the bones of the pastern joint



External Parts of the dog

- Forefoot
 - A front foot
- Brisket
 - The chest
- Loin
 - The part of the body on either side of the backbone between the rib and the hip



External Parts of the dog

- Dewclaw
 - The tiny, useless fifth claw on the inner part of the leg above the other toes
 - Often removed from puppies

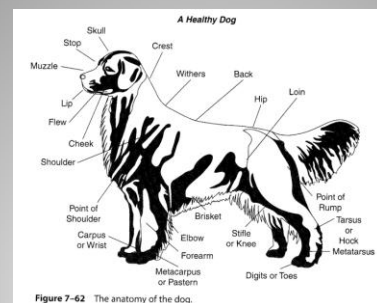


Figure 7-62 The anatomy of the dog.

Parts of a dog